



SINDHI COLLEGE

#33/2B, Kempapura, Hebbal, Bengaluru - 560024
Permanently Affiliated to Bengaluru City University
Approved by AICTE, NAAC Re-accredited

Ph.no: 080-23637544 E-mail: mail@sindhicollege.com

Backup Electric Supply

The institution is provided with a reliable backup power supply system to ensure uninterrupted academic and administrative activities during power interruptions.

The main electrical power supply is received from BESCO and is routed to the Main Distribution Board (MDB) of the college. From the main board, the power supply is connected to a 200 kVA Uninterruptible Power Supply (UPS) system installed on the campus.

The 200 kVA UPS system acts as a backup power source in case of power failure or voltage fluctuations. Whenever there is an interruption in the BESCO electricity supply, the UPS automatically provides power without any delay. This ensures continuous operation of computer laboratories, essential lighting, fans, network equipment, and other critical systems.

The backup power supply is primarily used to support:

- Computer laboratories
- Servers and networking devices
- Fans and lighting in essential areas
- Administrative and academic operations

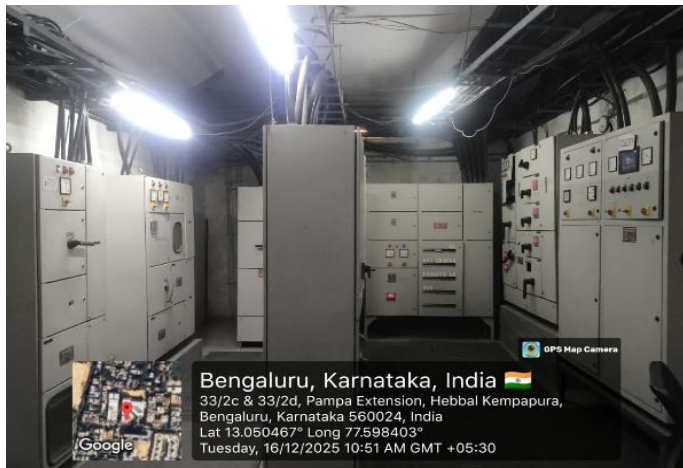
The UPS system helps protect sensitive electronic equipment from sudden power loss and voltage variations, thereby preventing data loss and hardware damage.

Overall, the 200 kVA backup power supply system ensures smooth functioning of teaching-learning processes and essential services even during power outages, maintaining reliability and efficiency within the campus.

Main power supply panel:

The panel is installed in the basement near UPS room

MDB (Main Distribution Board):



200 kVA UPS System:

The panel is installed in the basement near staircase

Room identification board



UPS battery bank



UPS sully to campus facilities

